



1



2



3



4



5



6



7



8



9



10



11



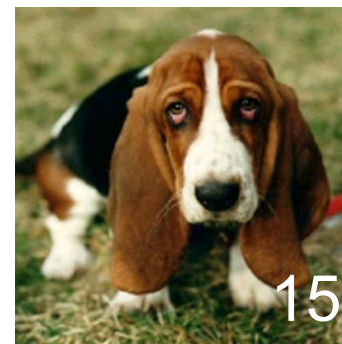
12



13



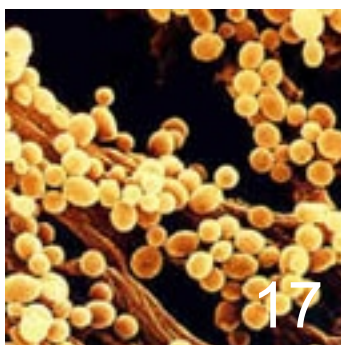
14



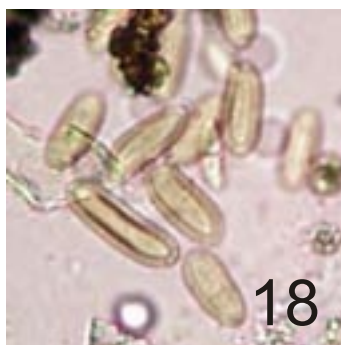
15



16



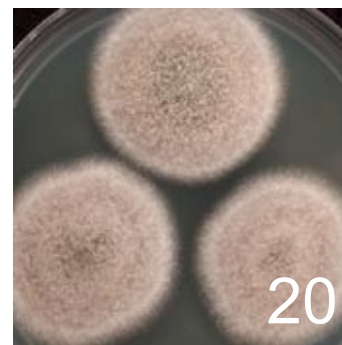
17



18



19



20

Inhalační panel

- 1 tomka vonná (g1)
- 2 srha laločnatá (g3)
- 3 bojinek (g6)
- 4 žito (g12)
- 5 olše (t2)
- 6 břiza (t3)
- 7 líska (t4)
- 8 dub (t7)
- 9 ambrózie pravá (w1)
- 10 pelyněk černobýl (w6)
- 11 jitrocel (w9)
- 12 Dermatomphagoides pter (d1)
- 13 Dermatomphagoides farin (d2)
- 14 kočka srst (e1)
- 15 pes srst (e2)
- 16 kůň srst (e3)
- 17 Penicillium notatum (m1)
- 18 Cladosporium herbarum (m2)
- 19 Aspergillus fumigatus (m3)
- 20 Alternaria tenuis (m6)

MUDr. Radek Klubal
Laborař alergologie
a klinické imunologie
Karlovo náměstí 7
128 00 Praha 2
Tel : 221 085 207
Fax : 222 162 142
biopath@biopath.cz
www.vseproalergiky.cz
www.biopath.cz
www.pyly.cz

obchod pro alergiky
Národní 25, 110 00 Praha 1
Tel : 221 085 207
www.biopath.cz